

Dear Families,

Our third math unit will be on addition and subtraction, and many of the lessons will be based on an EngageNY module. Don't forget to visit the 4th Grade Math Site for more resources!

### **Standards Covered**

★**4.OA.3** Solve multistep word problems posed with whole numbers and having whole-number answers using the four operations, including problems in which remainders must be interpreted. Represent these problems using equations with a letter standing for the unknown quantity. Assess the reasonableness of answers using mental computation and estimation strategies including rounding.

★**4.NBT.4** Fluently add and subtract multi-digit whole numbers using the standard algorithm.

### **New Vocabulary** (see 4th Grade Math website for definitions)

★Sum

★Difference

★Tape Diagram

★Bundling/making/renaming/changing/exchanging/regrouping/trading (for addition)

★Unbundling/breaking/renaming/changing/regrouping/trading (for subtraction)

★Number Sentence

★Estimate

### **Example Problems**

★ $207,426 + 128,744$

★The Lane family took a road trip. During the first week, they drove 907 miles. The second week they drove the same amount as the first week plus an additional 297 miles. How many miles did they drive during the second week?

★ $4,259 - 2,171$

★The paper mill produced 73,658 boxes of paper. 8,052 boxes have been sold. How many boxes remain?

★What number must be added to 1,575 to result in a sum of 8,625?

★The population of a city is 538,381. In that population, 148,170 are children.

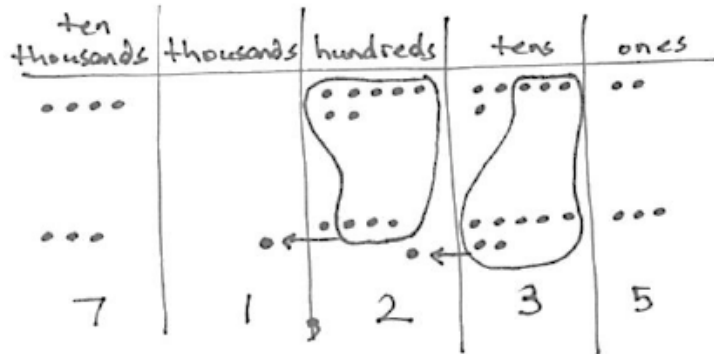
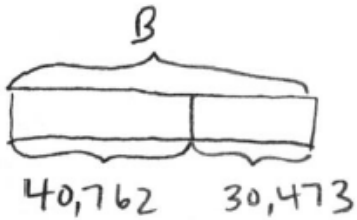
a. How many adults live in the city?

b. 186,101 of the adults are males. How many adults are female?

### Key Methods

★Using a place value chart to complete addition problems:  $40,762 + 30,473$

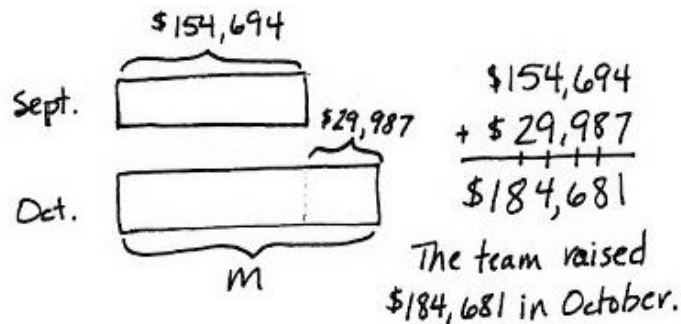
Note: The standard algorithm for addition will also be taught after this method is used to enhance understanding of place value in addition.



$$\begin{array}{r}
 40,762 \\
 + 30,473 \\
 \hline
 71,235
 \end{array}$$

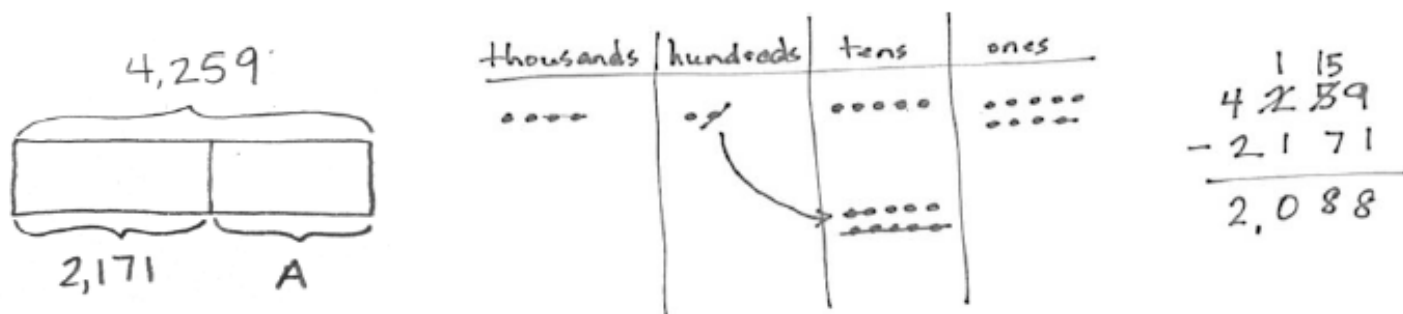
★Using a tape diagram to visualize and solve addition word problems.

The basketball team raised a total of \$154,694 in September and \$29,987 more in October than in September. How much money did they raise in October? Draw a tape diagram and write your answer in a complete sentence.



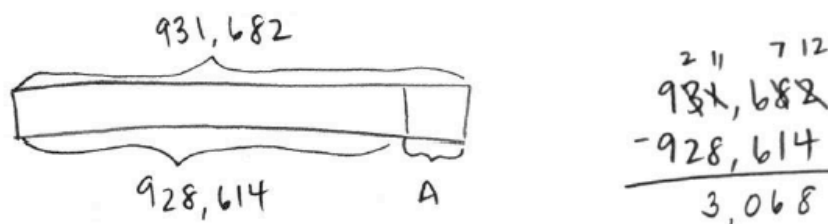
★Using a place value chart to complete subtraction problems:  $4,259 - 2,171$

Note: The standard algorithm for subtraction will also be taught after this method is used to enhance understanding of place value in subtraction.



★Using a tape diagram to visualize and solve subtraction word problems.

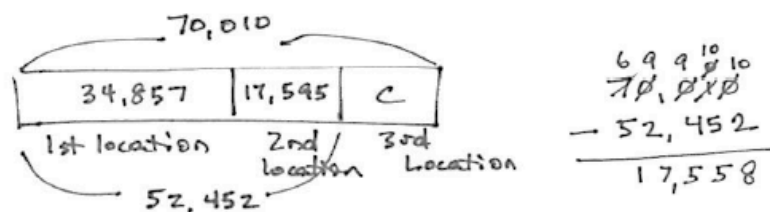
When the amusement park opened, the number on the counter at the gate read 928,614. At the end of the day, the counter read 931,682. How many people went through the gate that day?



3,068 people went through the gate that day.

★Using a tape diagram to visualize and solve multistep word problems.

A company has 3 locations with 70,010 employees all together. Their first location has 34,857 employees. Their second location has 17,595 employees. How many employees work in their third location?



17,558 employees work in their third location.

Please contact us if you have any questions,  
The District 90 4th Grade team